

SUPPLEMENTARY MATERIAL

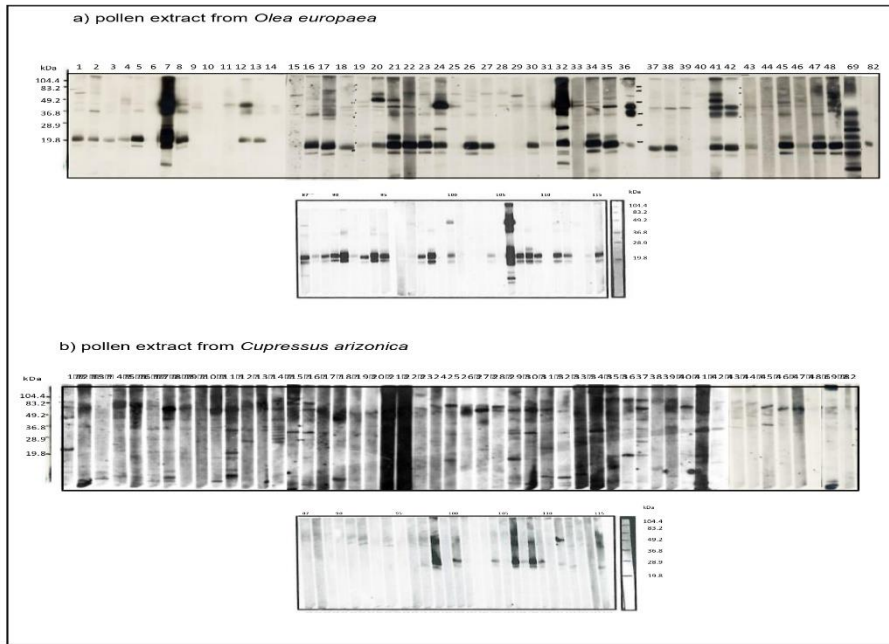
Legend Supplementary Figure 1: IgE immunoblotting of *Olea europaea* and *Cupressus arizonica* pollen extracts.

A, immunoblot of sera from patients with double sensitization to Cypress + Olive in a) *Olea europaea* pollen extract (1st image: sera 1:10, 2nd image sera 1:5) and b) *Cupressus arizonica* pollen extract (1st image: sera 1:10, 2nd image: sera 1:5).

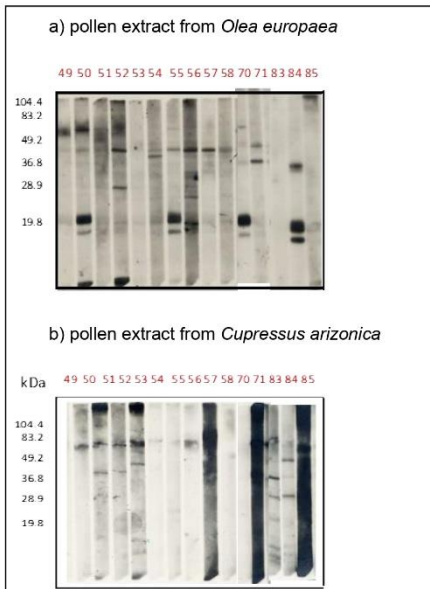
B, Immunoblot of monosensitized sera to Olive pollen in a) *Olea europaea* pollen extract and b) *Cupressus arizonica* pollen extract.

C, Immunoblot of monosensitized sera to Cypress pollen in a) *Olea europaea* pollen extract and b) *Cupressus arizonica* pollen extract.

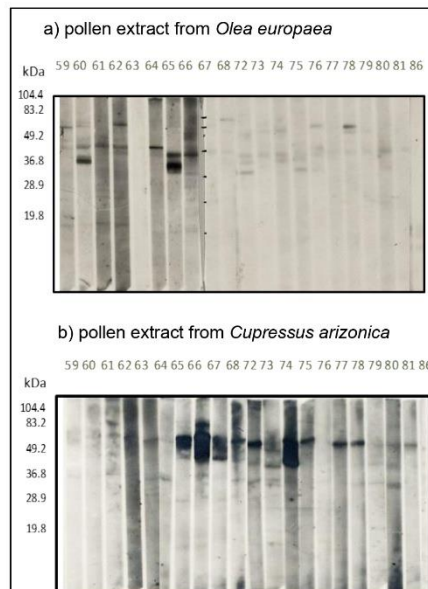
A



B



C



Supplementary Figure 1_Alonso et al.