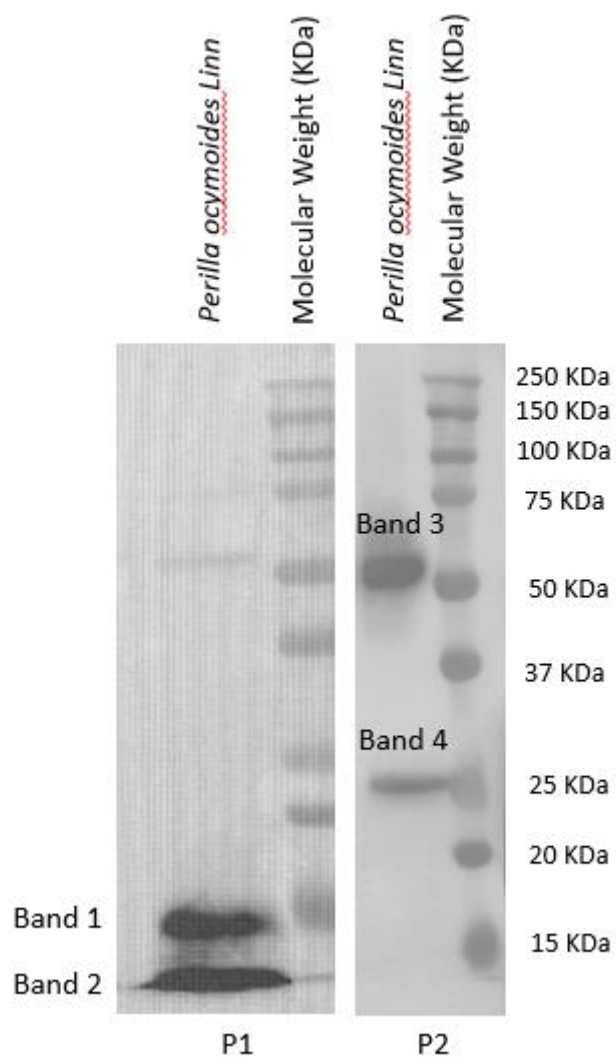
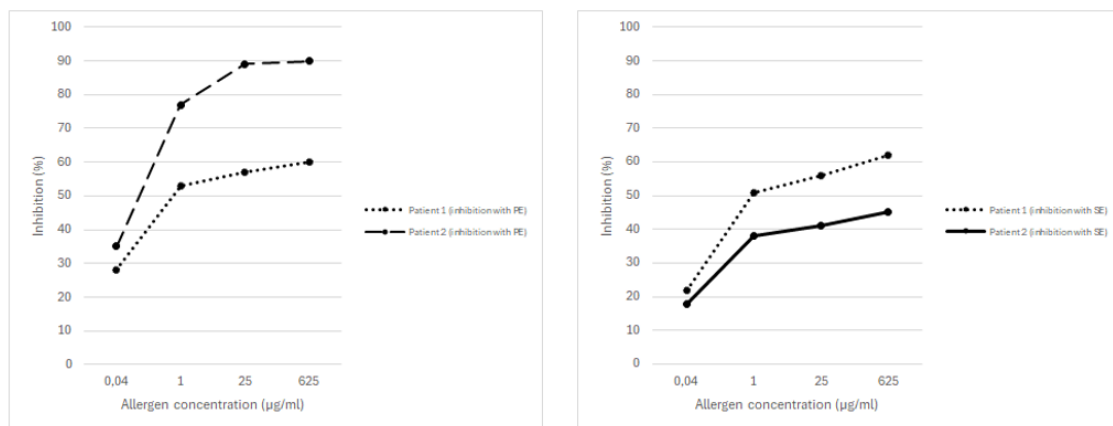


## SUPPLEMENTARY MATERIAL

**Figure S1.** SDS-PAGE IgE immunoblot with perilla and sesame extract faced to patient sera.

KDa, kilodalton; P1, patient 1; P2, patient 2.

**Figure S2.** Inhibition ELISA with (SE) in the solid phase and PE in the inhibitory phase; and PE in the solid phase and SE in the inhibitory phase.



SE, *Sesamum indicum* extract; PE, *Perilla ocymoides* Linn extract