

SUPPLEMENTARY MATERIAL

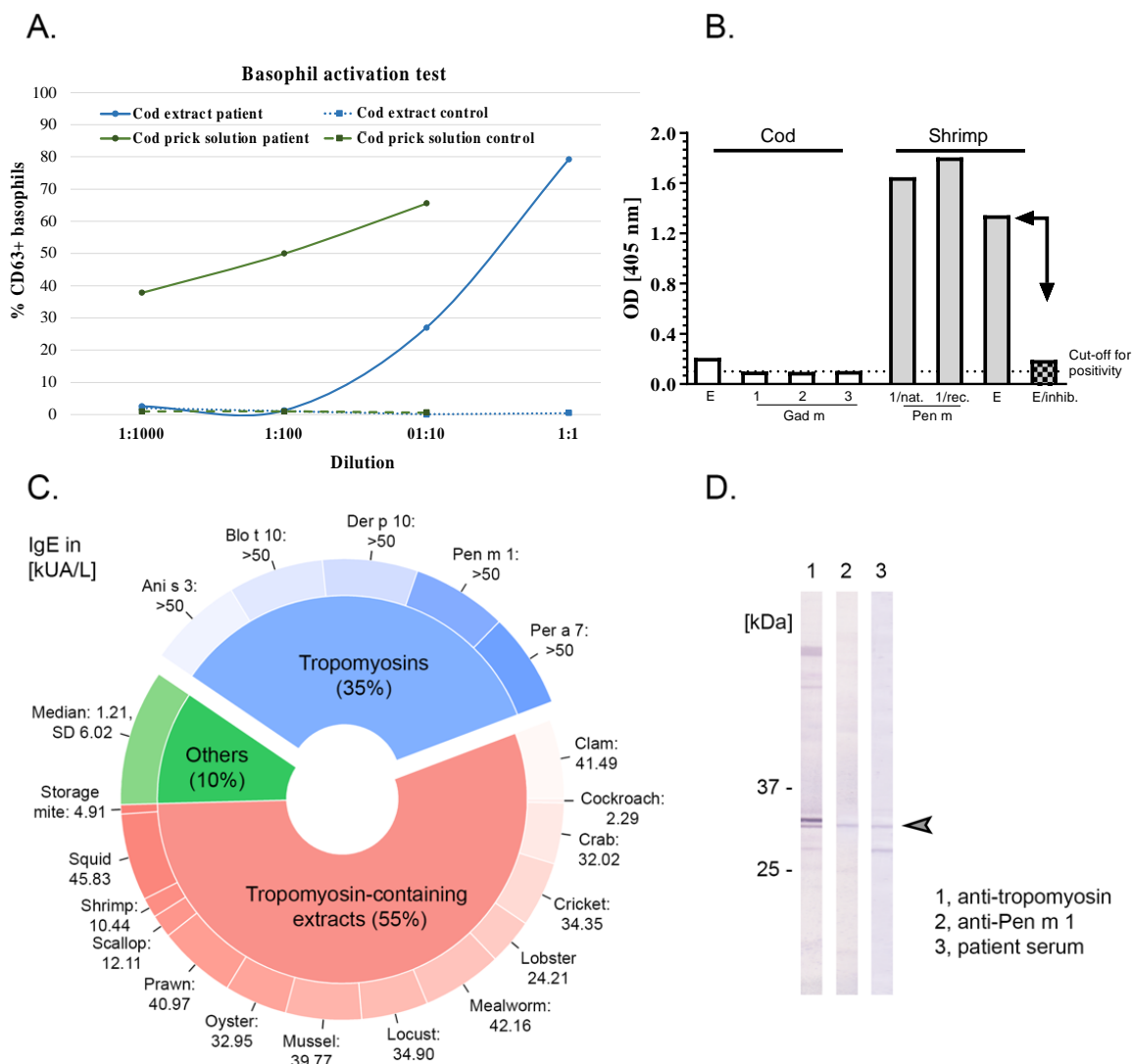


Figure E1. Sensitization tests in a patient with cod FDEIA. **A.** Basophil activation test of the patient and a healthy control with cod extract and cod prick test solution in different dilutions. **B.** IgE ELISA with coated cod and shrimp proteins (E, extract; E/inhib., inhibition with shrimp tropomyosin) and patient serum (dashed line: cut-off value corresponds to 0.1 OD). **C.** Macroarray reflecting the patients' IgE profile, reactivities represented for IgE >1 kUA/L. **D.** Immunoblot with coated cod extract (1, anti-tropomyosin antibody PA5-88151; 2, anti-shrimp tropomyosin antibody PA-SHM; 3, patient serum; arrow, main tropomyosin band at approx. 35 kDa).