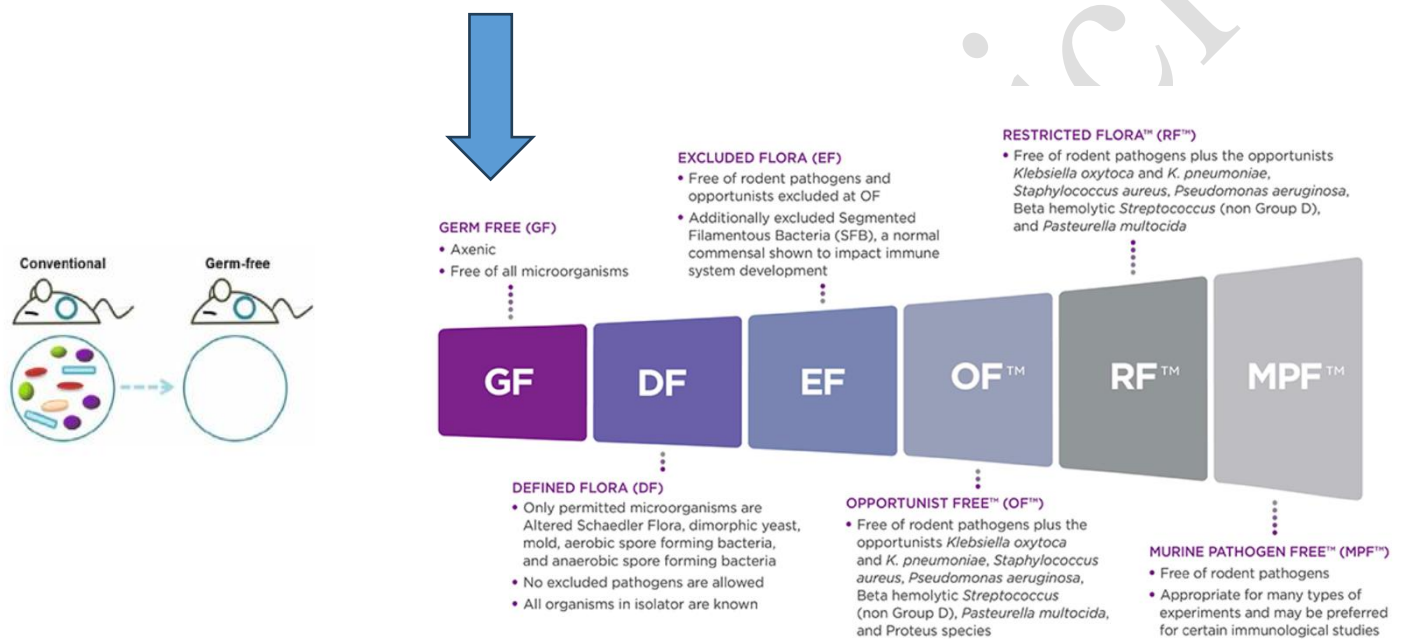


SUPPLEMENTARY MATERIAL

The rodents used in the laboratory where the patient works have special characteristics to be able to be used in an ethical and optimal manner for carrying out clinical trials. These rodents are genetically modified (transgenic) and specifically those that the patient in question works with are germ-free rodents as can be seen in the graph below.



This is an example of some of the tests that are carried out on a laboratory mouse to verify that it is free of germs.

Client ID	Investigator	Species	Strain/Breed	Sex	Age/DOB	Rack	Specimen
SFB MICE: MOTOR 1	centinea	mouse	B6+HsdJc	F	12/1/2020	1	Spot, environment, nest

Services/Tests Performed: Mouse 3R FELASA Annual SOPF (PCR) (1); Mouse 3R FELASA Annual SOPF (PCR) (1)

Serologic evaluation for antibodies to: *Clostridium piliforme*, *Mycoplasma pulmonis*, *Ectromella*, EDIM, LCMV, MAV1, MAV2, MHV, MNV, MPV, MVM, PVM, REO3, Sendai, TMEV

PCR evaluation for: *Aspicularis tetraptera*, *Bordetella bronchiseptica*, *CAR bacillus*, *Chlamaxia* spp., *Citrobacter rodentium*, *Corynebacterium kutscheri*, *Cryptosporidium* spp., *Eimeria* spp., *Entamoeba muris*, *Giardia muris*, *Helicobacter bilis*, *Helicobacter ganmani*, *Helicobacter hepaticus*, *Helicobacter mastomysinus*, *Helicobacter rodentium*, *Helicobacter* spp., *Helicobacter typhlorius*, *Klebsiella oxytoca*, *Klebsiella pneumoniae*, *Mycoplasma*, *Pasteurella pneumotropica* biotype Heyl, *Pasteurella pneumotropica* biotype Jawetz, *Proteus mirabilis*, *Pseudomonas aeruginosa*, *Radfordia/Myobia*, *Salmonella* spp., *Spirorucleus muris*, *Staphylococcus aureus*, *Streptobacillus moniliformis*, *Streptococcus pneumoniae*, *Streptococcus* sp. beta hemolytic Group A, *Streptococcus* sp. beta hemolytic Group B, *Streptococcus* sp. beta hemolytic Group C, *Streptococcus* sp. beta hemolytic Group G, *Syphacia muris*, *Syphacia obvelata*, *Trichomonas muris*

Page 1 of 4

If you have questions, please call +49 (0)7154 17 5055

IDEXX BioAnalytics Case # 45271-2021

General Comments: Environmental - filter

Summary: All test results were negative.

Client ID	Investigator	Species	Strain/Breed	Sex	Age/DOB	Rack	Specimen
SFB MICE: MOTOR 2	centinea	mouse	B6 + NZW	F	12/1/2020	2	Spot, environment, nest

Services/Tests Performed: Mouse 3R FELASA Annual (Serology) (1); Mouse 3R FELASA Annual SOPF (PCR) (1)

Serologic evaluation for antibodies to: *Clostridium piliforme*, *Mycoplasma pulmonis*, *Ectromella*, EDIM, LCMV, MAV1, MAV2, MHV, MNV, MPV, MVM, PVM, REO3, Sendai, TMEV

PCR evaluation for: *Aspicularis tetraptera*, *Bordetella bronchiseptica*, *CAR bacillus*, *Chlamaxia* spp., *Citrobacter rodentium*, *Corynebacterium kutscheri*, *Cryptosporidium* spp., *Eimeria* spp., *Entamoeba muris*, *Giardia muris*, *Helicobacter bilis*, *Helicobacter ganmani*, *Helicobacter hepaticus*, *Helicobacter mastomysinus*, *Helicobacter rodentium*, *Helicobacter* spp., *Helicobacter typhlorius*, *Klebsiella oxytoca*, *Klebsiella pneumoniae*, *Mycoplasma*, *Pasteurella pneumotropica* biotype Heyl, *Pasteurella pneumotropica* biotype Jawetz, *Proteus mirabilis*, *Pseudomonas aeruginosa*, *Radfordia/Myobia*, *Salmonella* spp., *Spirorucleus muris*, *Staphylococcus aureus*, *Streptobacillus moniliformis*, *Streptococcus pneumoniae*, *Streptococcus* sp. beta hemolytic Group A, *Streptococcus* sp. beta hemolytic Group B, *Streptococcus* sp. beta hemolytic Group C, *Streptococcus* sp. beta hemolytic Group G, *Syphacia muris*, *Syphacia obvelata*, *Trichomonas muris*

Page 1 of 4

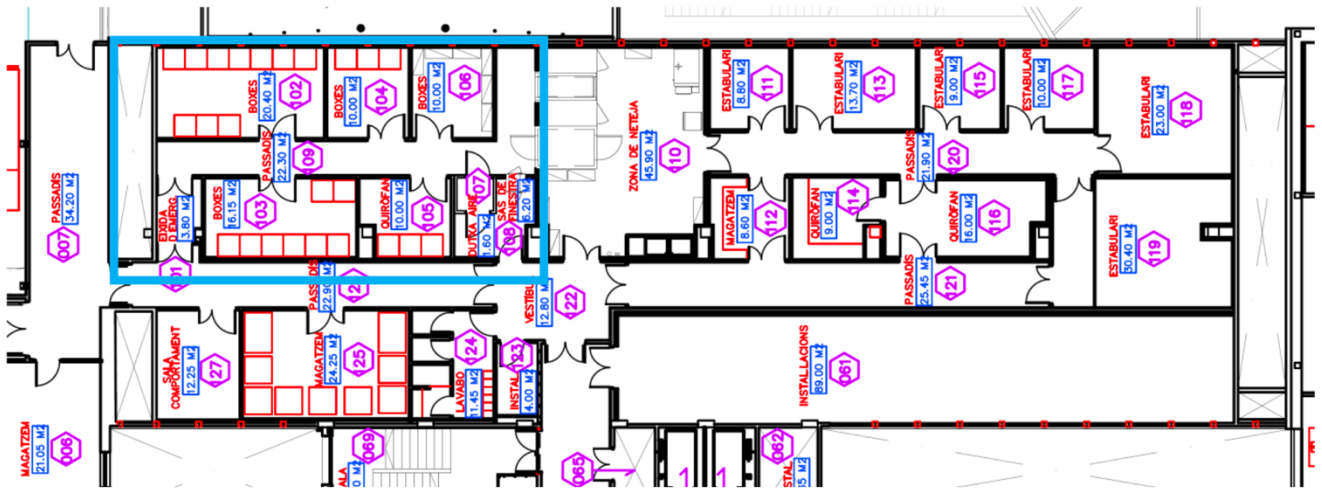
If you have questions, please call +49 (0)7154 17 5055

IDEXX BioAnalytics Case # 45271-2021

General Comments: Environmental - filter

Summary: All test results were negative.

Specific Pathogen Free SPF AREA

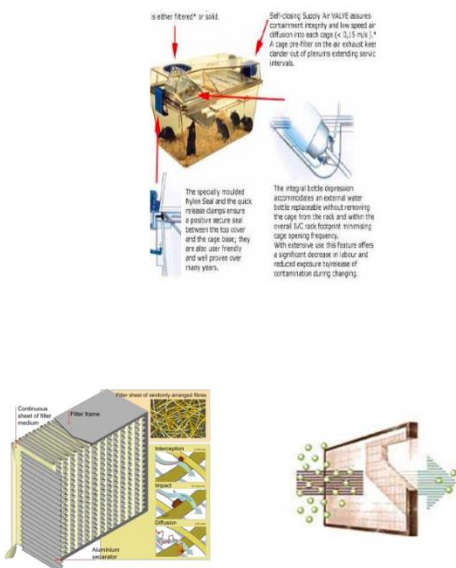


The facilities where the experiments are carried out by our patient is called a pathogen-free area, which means that a series of requirements must be met, such as ventilated cages with microinsulators, closed buckets, negative pressure, constant exchange air, and specialized filters.

Common tasks of our patient:

- Drug administration
- Taking samples, placing urinary catheter
- Surgical procedures: catheterizations, coronary bypass

VENTILATED CAGES: ventilated microinsulators





Special protective equipment is used by the personnel who work in this area of the laboratory. This protective equipment is highly secure, disposable and individual for each researcher.

